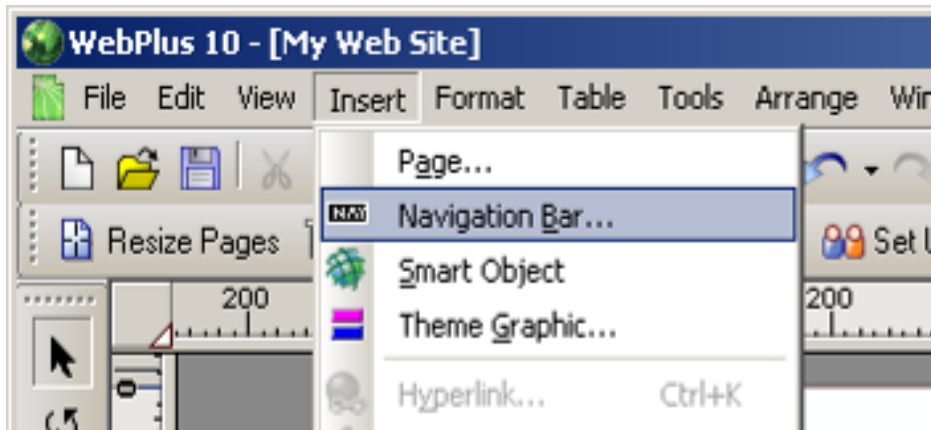


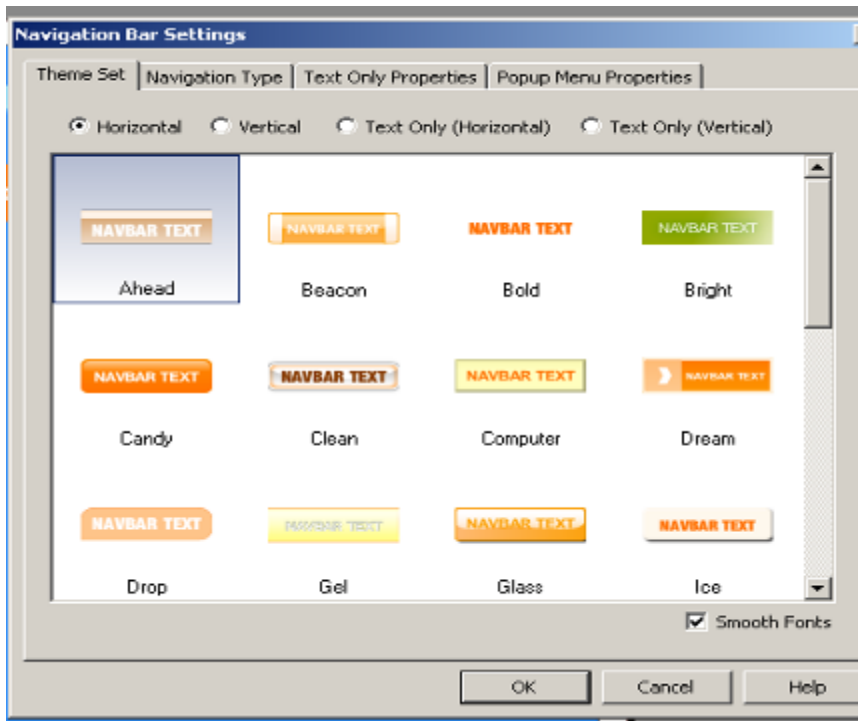
Navigation Bar and Animated Marquee

In the previous lesson we learnt how to insert a Navigation bar & Animated Marquee. A Navigation bar creates a separate link to all the pages within your site.

Step 1:



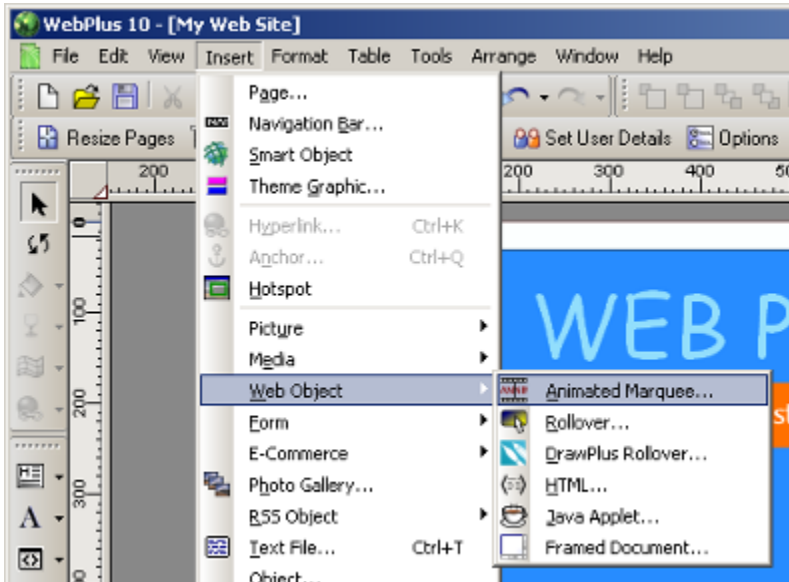
Step 2: Select whether you want a horizontal (across) or vertical (straight) navigation bar



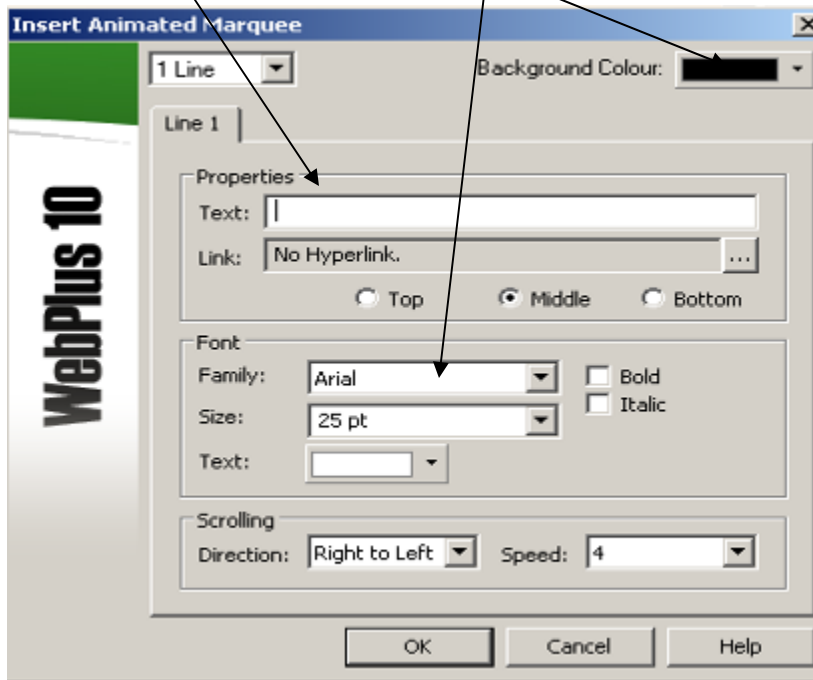
Step 3: Define area where you would like to insert the navigation bar

We then learnt how to insert an **Animated Marquee**, which is *scrolling text*.

Step 1: Go to Insert > Web Object > Animated Marquee



Step 2: Add text and define properties



Step 3: Define area where you would like to insert marquee